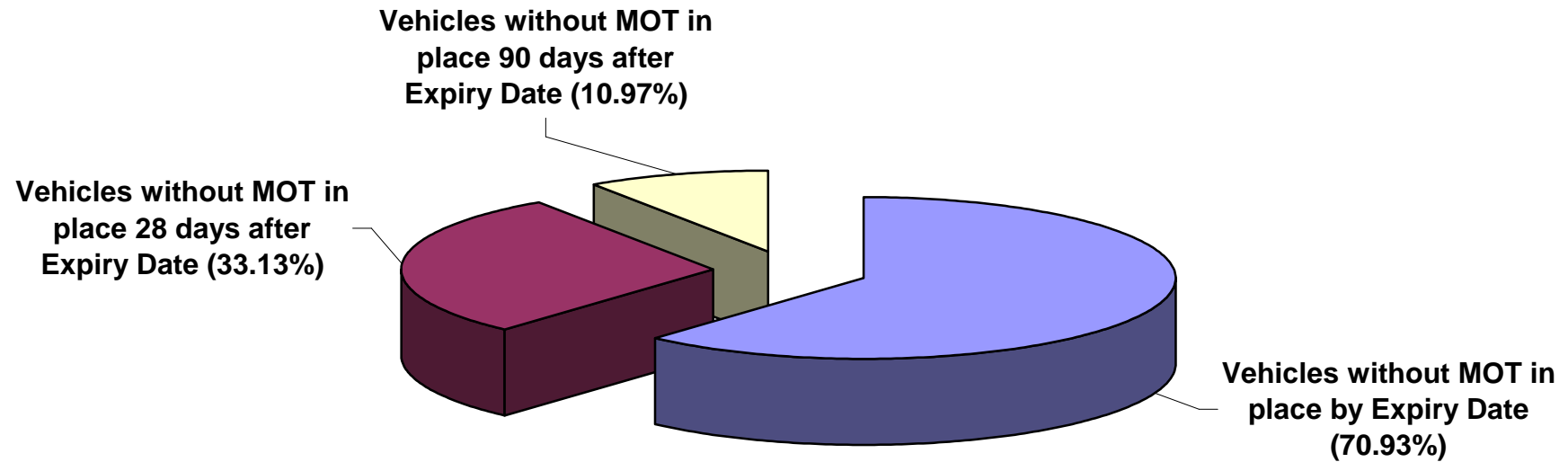
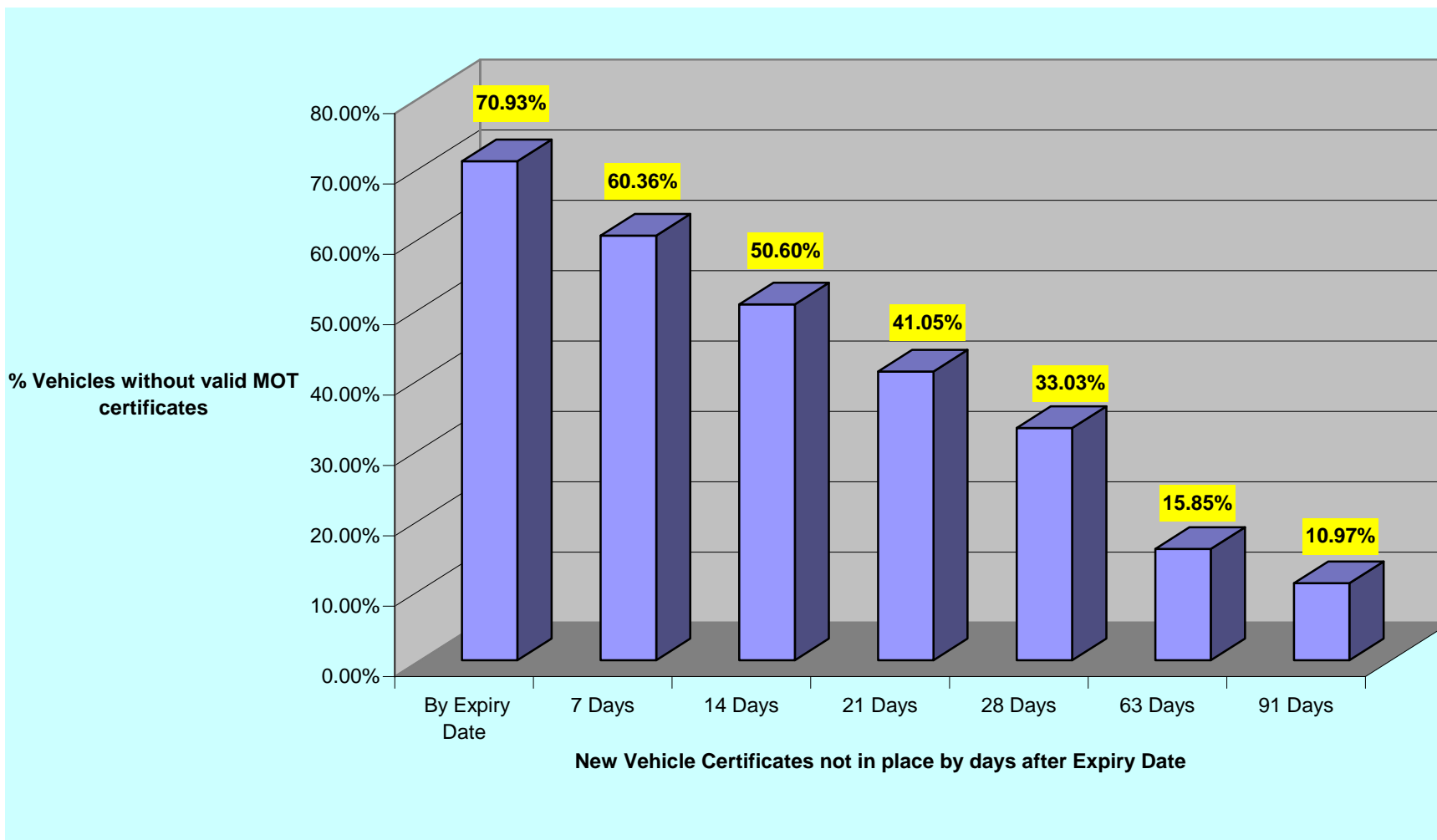


# ANALYSIS OF CERTIFICATE RENEWAL



## ANALYSIS OF MOT CERTIFICATES NOT RENEWED ON TIME



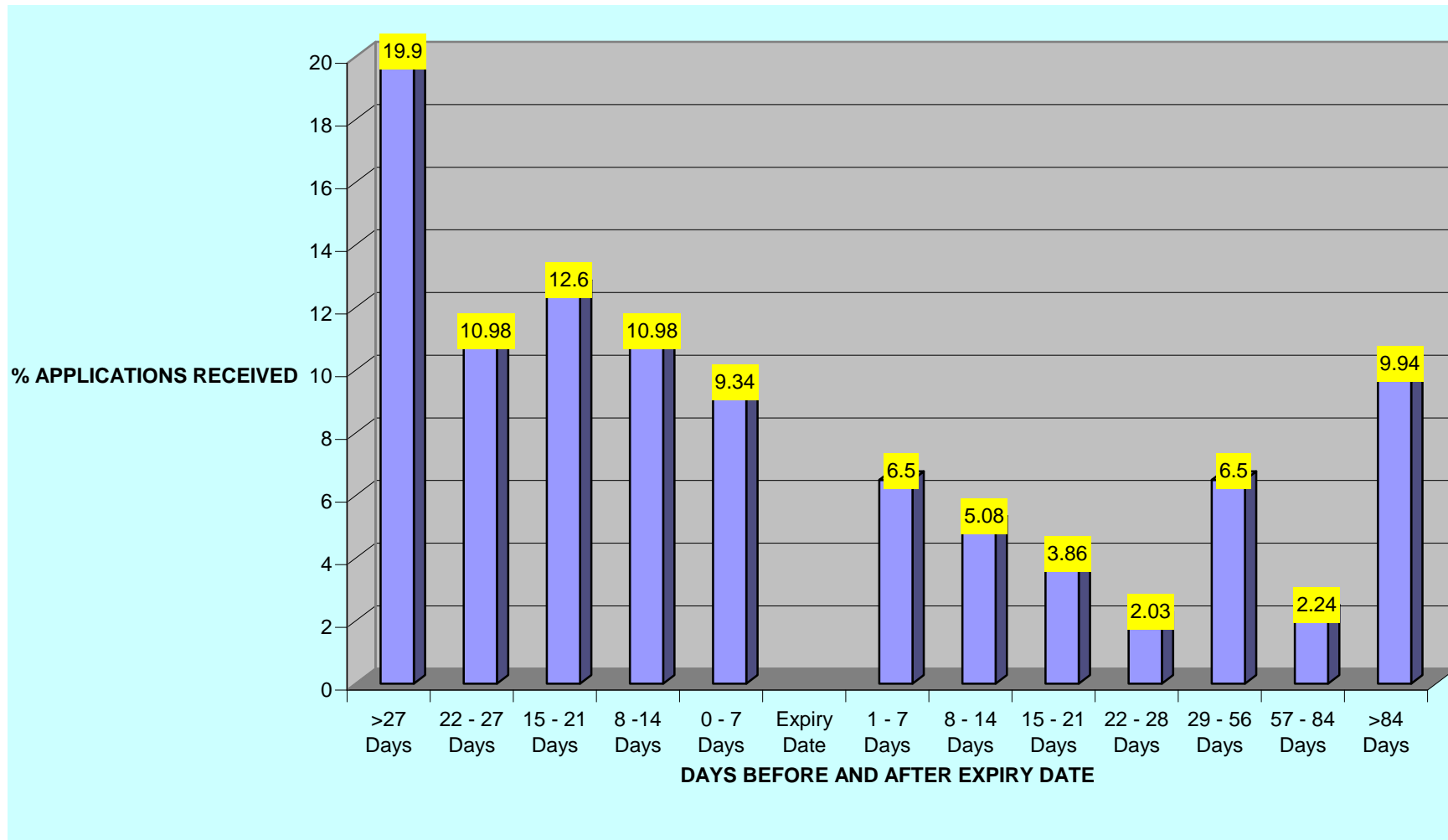
**Chart 1 PI Chart showing breakdown of renewal of certificates**

Vehicles without MOT in place by Expiry Date (70.93%)	70.93%
Vehicles without MOT in place 28 days after Expiry Date (33.13%)	33.13%
Vehicles without MOT in place 90 days after Expiry Date (10.97%)	10.97%

**Chart 2 Histogram showing breakdown of Certificate non renewal**

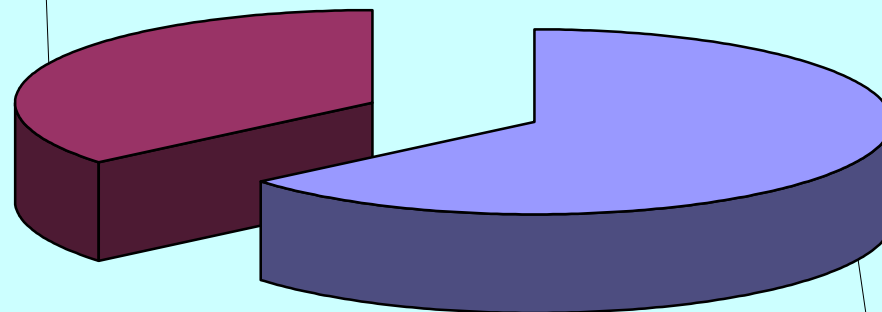
TIMESCALE	% Certificates not renewed
By Expiry Date	70.93%
7 Days	60.36%
14 Days	50.60%
21 Days	41.05%
28 Days	33.03%
63 Days	15.85%
91 Days	10.97%

# ANALYSIS OF APPLICATION DATES



# MOT Application Results

Did not apply for MOT certificate before expiry of old cert. (36.18%)



Applied for MOT certificate before expiry of old cert. (63.82%)

- Applied for MOT certificate before expiry of old cert. (63.82%)
- Did not apply for MOT certificate before expiry of old cert. (36.18%)

## Analysis of applications received

Time	No of Applications Received	% of Applications Received
78 - 84 Days	2	0.41
71 - 77 Days	2	0.41
64 - 70 Days	0	0.00
57 - 63 Days	1	0.20
50 - 56 Days	7	1.42
43 - 49 Days	18	3.66
36 - 42 Days	17	3.46
29 - 35 Days	42	8.54
22 - 28 Days	63	12.80
15 - 21 Days	62	12.60
8 - 14 Days	54	10.98
0 - 7 Days	46	9.35
1 - 7 Days	32	6.50
8 - 14 Days	25	5.08
15 - 21 Days	19	3.86
22 - 28 Days	10	2.03
29 - 35 Days	12	2.44
36 - 42 Days	5	1.02
43 - 49 Days	9	1.83
50 - 56 Days	6	1.22
57 - 63 Days	3	0.61
64 - 70 Days	5	1.02
71 - 77 Days	2	0.41
78 - 84 Days	1	0.20
85 - 91 Days	1	0.20
92 - 98 Days	4	0.81
99 - 105 Days	2	0.41
106 - 112 Days	1	0.20
113 - 119 Days	3	0.61
120 - 126 Days	0	0.00
127 - 133 Days	1	0.20
134 - 140 Days	4	0.81
141 - 147 Days	1	0.20
148 - 154 Days	1	0.20
155 - 161 Days	1	0.20
162 - 168 Days	0	0.00
>169 Days	30	6.10

492

Size of Sample was 492, 13 not knowns (ie no expiry date was provided) were

Chart 1 Analysis of Application Dates and Expiry Date

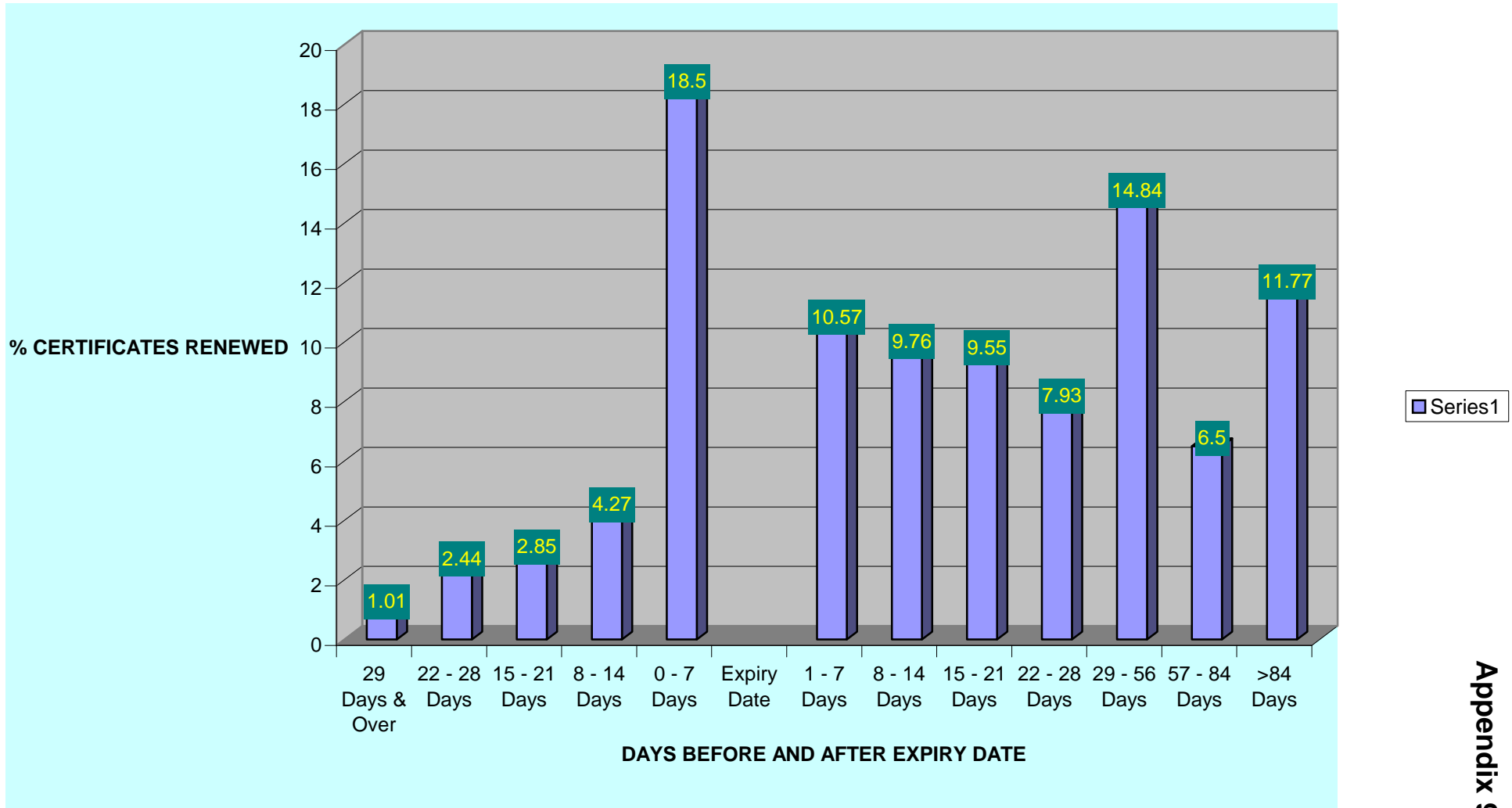
	% Applications Received
>27 Days	19.9
22 - 27 Days	10.98
15 - 21 Days	12.6
8 - 14 Days	10.98
0 - 7 Days	9.34
Expiry Date	
1 - 7 Days	6.5
8 - 14 Days	5.08
15 - 21 Days	3.86
22 - 28 Days	2.03
29 - 56 Days	6.5
57 - 84 Days	2.24
>84 Days	9.94

Chart 2 Did Not apply for MOT before expiry of Certificate

Applied for MOT ce	63.82%
Did not apply for M	36.18%

not included in the figures

### ANALYSIS OF CERTIFICATE RENEWALS



**Analysis of Certificates renewed after expiry of old certificate.**

<b>Time</b>	<b>No of Certs Renewed</b>	<b>% of Certs Renewed</b>	<b>%of Certs Not Renewed</b>
By Expiry Date	143	29.07	70.93
0 - 7 Days	52	10.57	60.36
8 - 14 Days	48	9.76	50.60
15 - 21 Days	47	9.55	41.05
22 - 28 Days	39	7.93	33.13
29 - 35 Days	32	6.50	26.62
36 - 42 Days	18	3.66	22.96
43 - 49 Days	12	2.44	20.52
50 - 56 Days	11	2.24	18.29
57 - 63 Days	12	2.44	15.85
64 - 70 Days	6	1.22	14.63
71 - 77 Days	7	1.42	13.21
78 - 84 Days	7	1.42	11.78
85 - 91 Days	4	0.81	10.97
92 - 98 Days	1	0.20	10.77
99 - 105 Days	3	0.61	10.16
106 - 112 Days	3	0.61	9.55
113 - 119 Days	4	0.81	8.73
120 - 126 Days	0	0.00	8.73
127 - 133 Days	3	0.61	8.13
134 - 140 Days	3	0.61	7.52
141 - 147 Days	1	0.20	7.31
148 - 154 Days	1	0.20	7.11
155 - 161 Days	3	0.61	6.50
162 - 168 Days	1	0.20	6.30
>169 Days	31	6.30	0.00
<b>TOTAL</b>	<b>492</b>	<b>100.00</b>	

**Extrapolation using published number of tests carried out by DVTA**

Time	% of Certs Not Renewed	Extrapolated Figure using NO of DVTA Tests
By Expiry Date	70.93	281202
7 Days	60.36	239297
14 Days	50.60	200604
21 Days	41.05	162743
28 Days	33.13	131344
35 Days	26.62	105535
42 Days	22.96	91025
49 Days	20.52	81352
56 Days	18.29	72511
63 Days	15.85	62837
70 Days	14.63	58001
77 Days	13.21	52371
84 Days	11.78	46702
91 Days	10.97	43491
98 Days	10.77	42698
105 Days	10.16	40279
112 Days	9.55	37861
119 Days	8.73	34610
126 Days	8.73	34610
133 Days	8.13	32231
140 Days	7.52	29813
147 Days	7.31	28980
154 Days	7.11	28188
161 Days	6.50	25769
168 Days	6.30	24976

Number of tests carried out 396,450 (See 02/03 Business Plan)

**Analysis of Certificate Renewal**

	% Renewal Dates
29 Days & Over	1.01
22 - 28 Days	2.44
15 - 21 Days	2.85
8 - 14 Days	4.27
0 - 7 Days	18.5
Expiry Date	
<b>1 - 7 Days</b>	<b>10.57</b>

8 - 14 Days	9.76
15 - 21 Days	9.55
22 - 28 Days	7.93
29 - 56 Days	14.84
57 - 84 Days	6.5
>84 Days	11.77